

OMNI-DIRECTIONAL LOUDSPEAKER BP012

Applications:

- Measurement of sound insulation in buildings and of building elements ISO 140
- Room Reverberation Time measurements ISO 3382
- Measurement of the reverberation time of ISO 354

Main characteristics:

- Directivity diagram completely omni-directional
- Supplied with Flight case FL012.
- Part of the building acoustics **CESVA** equipment.

The FP120 Sound Pressure Source has two well defined parts: the Omni-directional Loudspeaker BP012 and the Power amplifier / Noise Generator AP600.

The BP012 has been designed to satisfy the needs of people dedicated to building and room acoustics. The BP012 allows you to measure airborne sound insulation, reverberation time and sound absorption, conforming the following standards:

- *ISO 3382:* Measurement of the reverberation time of rooms with reference to other acoustical parameters.

- *ISO 354:* Measurement of sound absorption in a reverberation room

- *ISO 140:* Measurement of sound insulation in buildings and of building elements

The BP012 handles an electrical power of 600 W RMS developing 123 dB of sound power level in the third octave bands with centre frequency between 100 and 5,000 Hz. The loudspeaker has been designed to supply the maximum power during an hour.

The BP012 has 12 loudspeaker mounted on a dodecahedral housing. This ensures a complete omni-directional radiation diagram; that is to say, sound is radiated in

a spherical distribution, as it is said in the ISO 140 and ISO 3382 standards.

To achieve a user-friendly equipment the BP012 includes 5 rubber feet to leave it on the floor, 1 hoisting eye for suspending and 2 grips for ergonomic handling. A Carrying Case with wheels and a Tripod has been also designed. The BP012 is internally reinforced with an aluminium core that brings robustness and allows adapting it to the TR012 tripod.

The BP012 is supplied with the FL012 carrying case (flight-case).



Technical specifications

Omni-directional Loudspeaker BP012

Standards

Meeting the following standards:

- ISO 140
- ISO 354
- ISO 3382
- DIN 52210

ACUSTIC POWER

123 dB PWL (with pink noise, 1/3 octave bands with centre frequency between 100 – 5000 Hz) feed it by an AP600 amplifier. To see the distribution by bands look at the diagram.

OMNI-DIRECTIONALITY

The BP012 directivity complies the directivity criteria from the ISO 140 and ISO 3382 standards. See diagrams

OPERATING FREQUENCY RANGE

1/3 octave bands with centre frequency between 100 – 5000 Hz

MAXIMUM INPUT POWER

600 W rms

NOMINAL IMPEDANCE

6 Ω

CONNECTOR

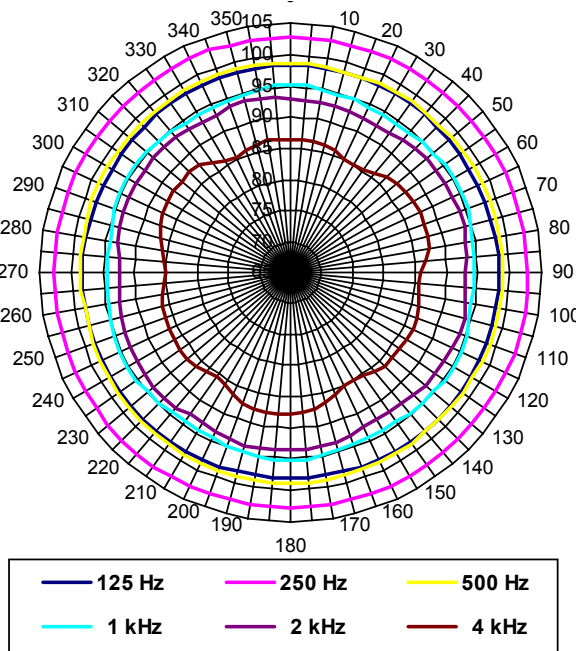
Speakon \odot of 4 pines (+1, -1)

DIMENSIONS and WEIGHT

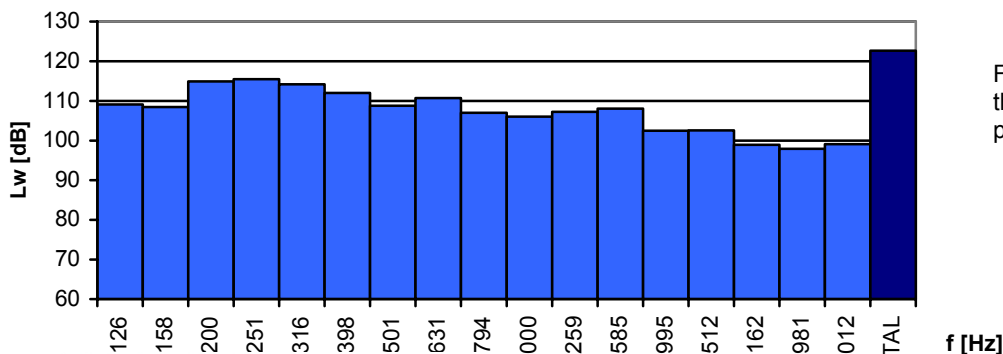
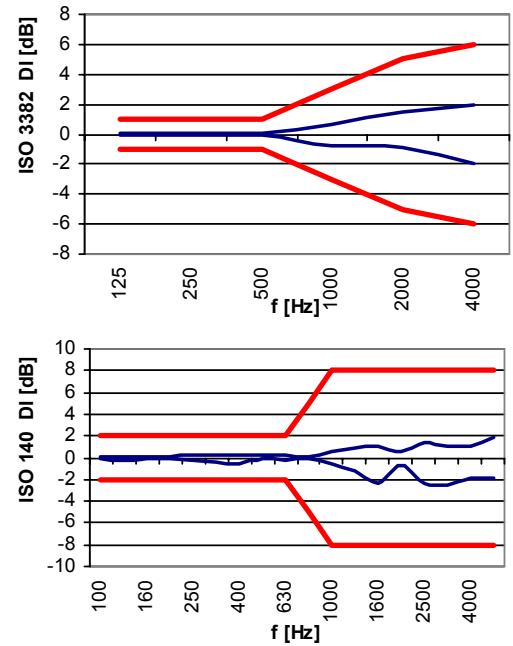
Diameter: 40 cm
Weight: 19,7 kg

DICESVA S. L. reserves the right to change specifications and accessories without notice.

Directivity diagrams for the octave bands centred in 125 Hz, 250 Hz, 500 Hz, 1 kHz, 2 kHz and 4 kHz:



BP012 Directivity (D) in accordance with ISO 140 and ISO 3382 standards

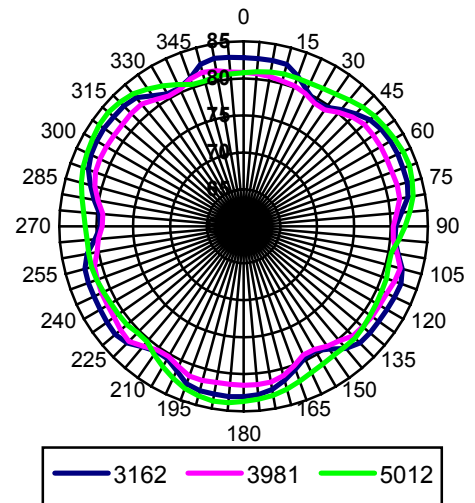
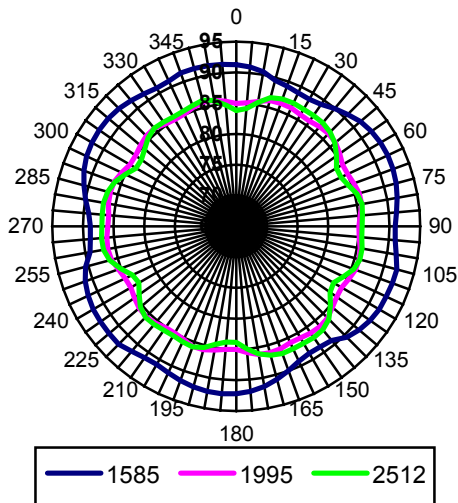
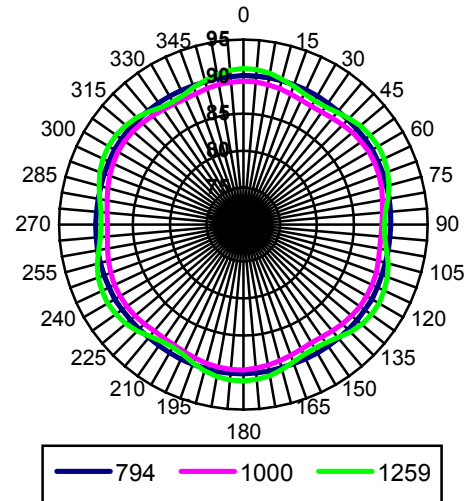
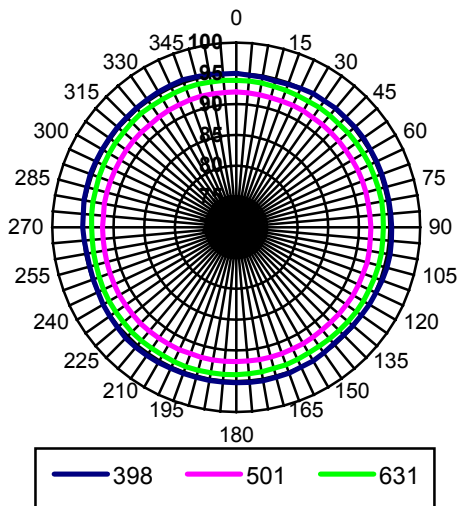
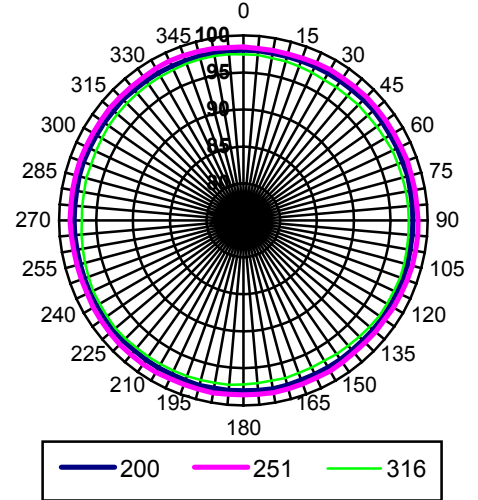
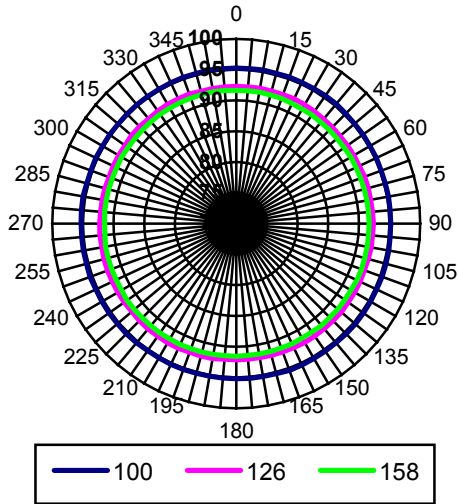


Frequency distribution for the BP012's acoustic power

Specifications technical

Omni-directional Loudspeaker BP012

Directivity diagrams for the one third octave bands of 100 Hz, 125 Hz, 160 Hz, 200 Hz, 250 Hz, 315 Hz, 400 Hz, 500 Hz, 630 Hz, 800 Hz, 1000 Hz, 1250 Hz, 1600 Hz, 2000 Hz, 2500 Hz, 3150 Hz, 4000 Hz and 5000 Hz:



Accessories BP012

- Tripod TR012: Tripod for supporting the BP012, It allows setting it at heights from 0.1 m to 2.5 m.
- Flight case FL012: Protective case, in rack format, for transportation of the BP012. The FL012 is a trolley type hard case with wheels.
- Cable CN012: 10 m long loudspeaker cable with Neutrik Speakon® connectors. As an option, it can be ordered with different length and connector type (XLR, Jack, banana, open).
- Carrying Bag BL012: Carrying bag for transportation.

SUPLIED ACCESSORIES

- Flight case **FL012**

OPTIONAL ACCESSORIES

- Tripod **TR012**
- Connection cable **CL012**
- Transport bag **BT012**

